



221A East Georgia St.  
Vancouver, BC Canada  
V6A 1Z6

hello@artistswalkinghome.ca  
artistswalkinghome.ca  
778 709 2075

Copyright Artists Walking Home: not for academic use or publication.

## **Architectural Features Glossary:**

**Awning:** a roof-like shelter of canvas or other material extending over a doorway or window to provide protection.

**Brick:** a block of clay hardened by drying in the sun or burning in a kiln, and used for building and paving.

**City of Vancouver Heritage:** A program run by the City of Vancouver which gives historical buildings recognition as important parts of Vancouver's architecture and seeks to protect them from destruction or alteration.

**Concrete:** an artificial, stone-like material used for various building purposes.

**Cornice:** any prominent, continuous, horizontally projecting feature surmounting a wall or other construction.

**Decorative Details:** Can often be used to identify a building's style or period of construction. You will see multiple details in Yaletown, especially near the roofline of the buildings.

**Edwardian Commercial Architecture:** building is usually made of brick or concrete, with a cornice, decorative details, and a flat roof.

**Façade:** The exterior (especially the front) portion of a building.

**Float Glass:** extremely smooth glass manufactured by pouring molten glass onto a surface of molten tin.

**Glazed white brick:** A type of ceramic brick that is white in colour and smooth like porcelain. It is very well suited to rainy climates as it doesn't get stained.

**Heritage plaque:** A plaque put on buildings that are part of the City of Vancouver Heritage program in order to identify them to the public.

**High-rise:** a building with a large number of stories and equipped with an elevator.

**Mortar:** any material used to bind (stick) bricks together in construction.

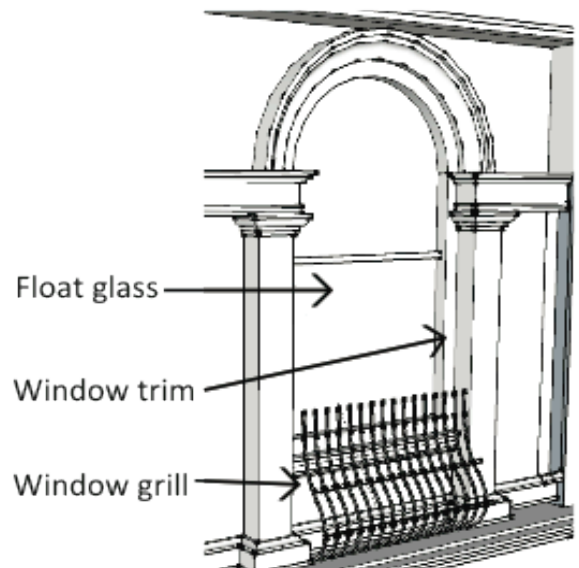
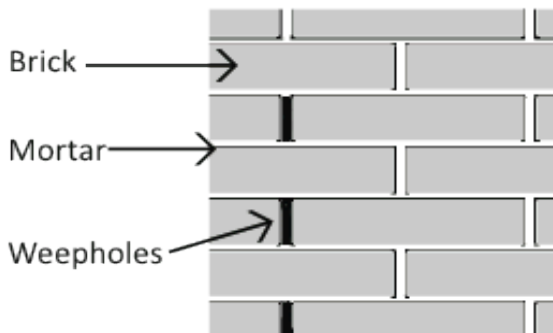
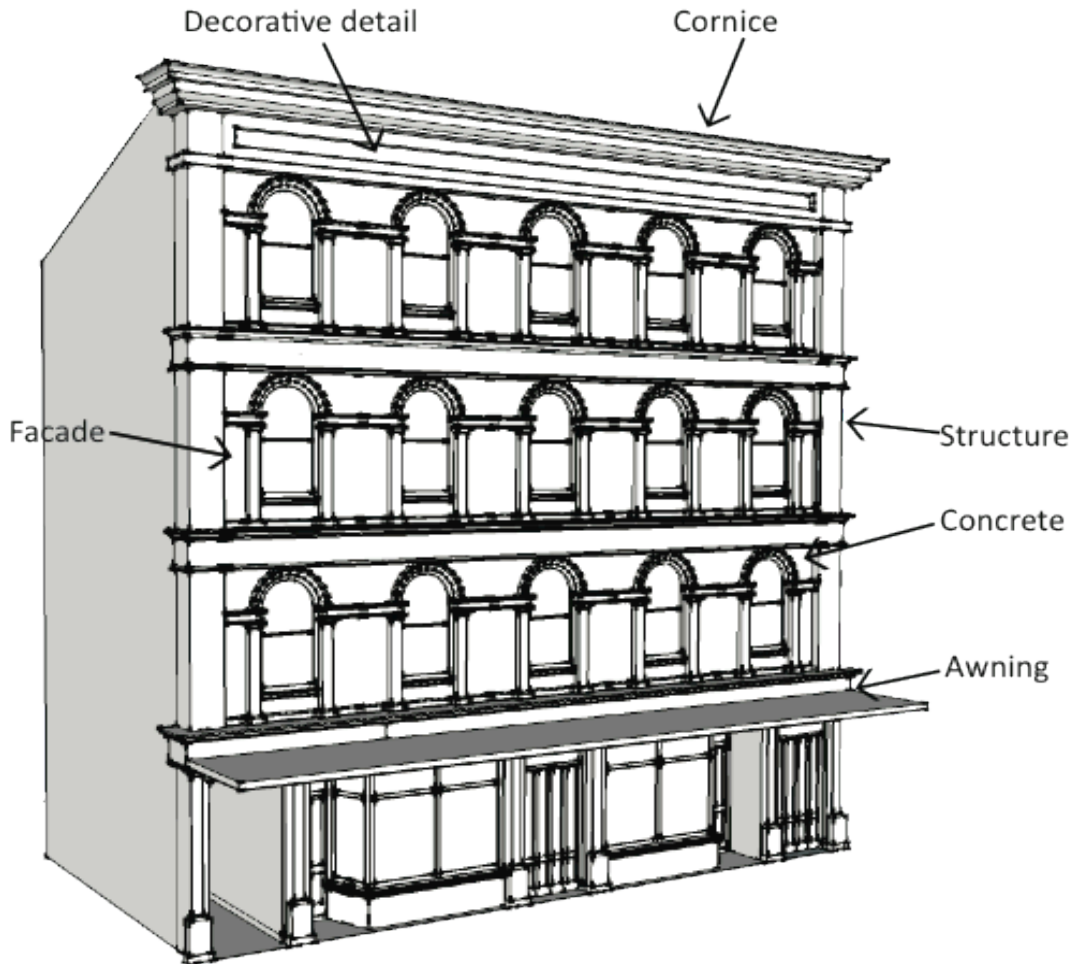
**Structure/structural:** the parts of the building that allow it to stand up

**Systems:** an assembly of things that all connect together. You will see lots of systems in Yaletown: the street system, the transit system, the social system, etc.

**Weepholes:** Small gaps in the mortar that allows water and air to flow. Found in non-structural brick walls.

**Window fixtures:** Details added to the window of a building such as flower boxes or grills.

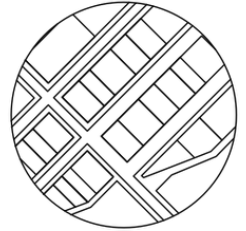
**Window trim:** the thin material that surrounds and frames a window.



# Lynch's Five Elements of Wayfinding

## Districts

Large sections of the city that can be defined as having a similar identity or character



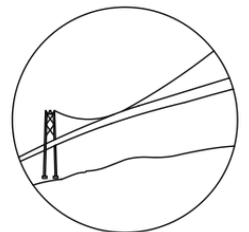
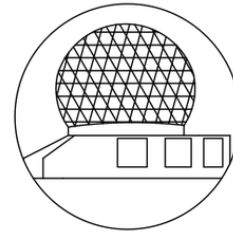
## Edges

Boundaries such as walls, buildings, and shorelines



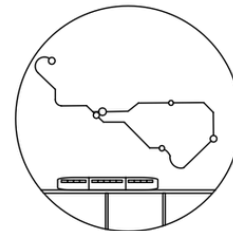
## Landmarks

Easily identified objects that serve as reference points



## Nodes

Focal points and intersections; important hubs or points where parts of a system meet



## Paths

The streets, sidewalks, and trails where people travel

